



BARCELONA

15th National Selection Conference of EYP España

EUROPEAN **YOUTH** PARLIAMENT
ESPAÑA SPAIN



TRAVEL BOOKLET

Barcelona 2020 | 15th National Selection Conference of EYP España



CONTENT

| | |
|---------------------------------|----|
| Dates & Places | 4 |
| How To Get To Barcelona | 4 |
| Accommodation | 4 |
| How To Get To The Accommodation | 5 |
| Visa | 6 |
| Next Steps | 6 |
| Visiting Barcelona | 7 |
| Contact | 20 |



Follow us on Facebook for more information



DATES & PLACES

Barcelona 2020, the 15th National Session of EYP España will be from the **15th of April till the 19th of April 2020**. Remember that the Registration for Officials will start at 11:00 CET and that the Registration for Delegates & Teachers will start at 15:00 CET.

The registration (both for officials, teachers and delegates) will always be at the accommodation, the Unite Hostel Barcelona (**AV. d'Icària, 145, 08005 Barcelona**). So despite where you're arriving, you'll have to go to this direction.

HOW TO GET TO BARCELONA

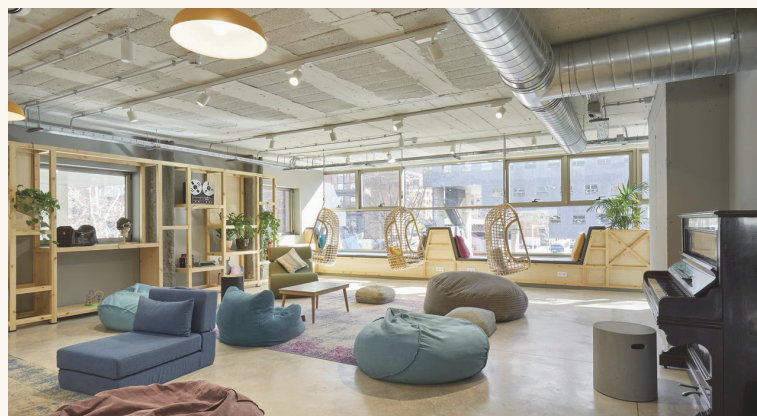
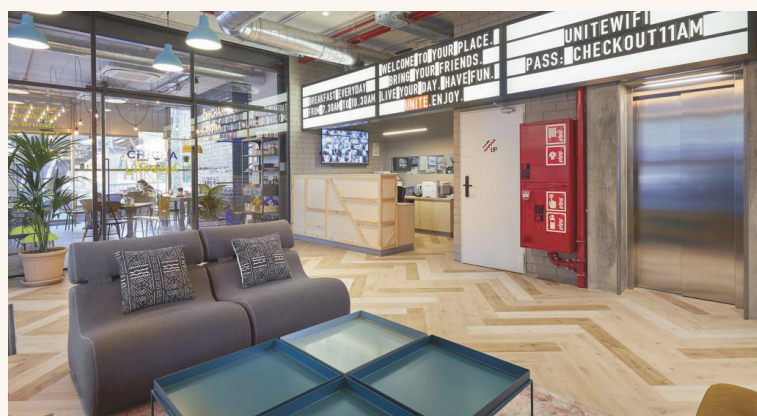
By plane: the main airport in Barcelona is 'El Prat'. This is probably the most comfortable way to get to Barcelona. El Prat is located approximately 10 km South of the city, and you can get from the airport to the city centre by train, bus or taxi.

By train: the two main train stations in Barcelona are 'Sants' and 'Estació de França'. Both are located within the city, but Estació de França is much closer to the accommodation.

By bus: the main bus station is 'Estació d'autobuses Barcelona Nord' with buses that come from all around Spain and even from beyond Spanish borders. It is located very close to the city centre and only a short walk away from the accommodation.

ACCOMMODATION

As stated before, the accommodation for the session will be the Unite Hostel Barcelona. It is located right in the middle of Poblenou, an amazing location, and it is close to the beach and the city centre. For more information visit <https://unitehostelbarcelona.com/>.



HOW TO GET TO THE ACCOMMODATION

From 'El Prat' airport

Train - can be accessed from terminal 2 (T2). If you arrive at terminal 1 (T1) there is a free bus service (Bustransit) that will take you to terminal 2. The train line is the R2 and it runs every day from 05:42 to 23:38. A one-way ticket costs that 4,20€. You should get off at 'Clot-Aragó', which is a 30 minute walk away from the hostel. You can also take the subway from Clot-Aragó to Marina (2 stops) and then walk for 10 minutes to the hostel.

R2
Nord

Subway - can be accessed from both terminals. The subway line it's the L9S, and the ticket costs 5,15€. You'll have to get off at Torrassa and take the L1 to Marina and then walk 10 minutes to the hostel.

L9

L1

Bus - there is a light blue bus called Aerobús that will take you from both terminals to the city centre. It runs every day from 05:35 to 01:00 and a ticket costs 5,90€. You should get off at the last stop, 'Plaça Catalunya', and from there you can either walk (30 minutes) or take the H16 (Pl. Catalunya - Portal de l'Àngel) bus to the accommodation. If you take the bus you should get off at 'Av Icaria', which is right next to the hostel.



Taxi - taxis in Barcelona can be easily recognised by their yellow and black colours, and they are located at the exits of each terminal. A taxi from the airport to the hostel takes around forty minutes and it costs approximately 45€.

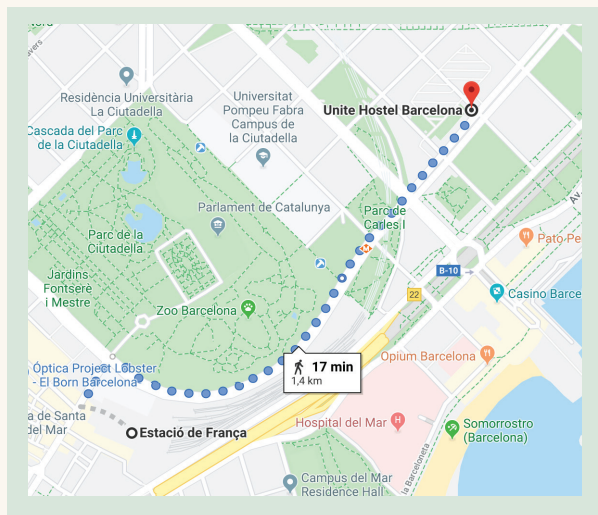
From 'Sants' train station

You can take a train from the station itself to Plaça Catalunya and then either walk to the hostel or take the H16 (Pl. Catalunya - Portal de l'Àngel) bus to the accommodation. If you take the bus, you should get off at 'Av Icaria', which is right next to the hostel.



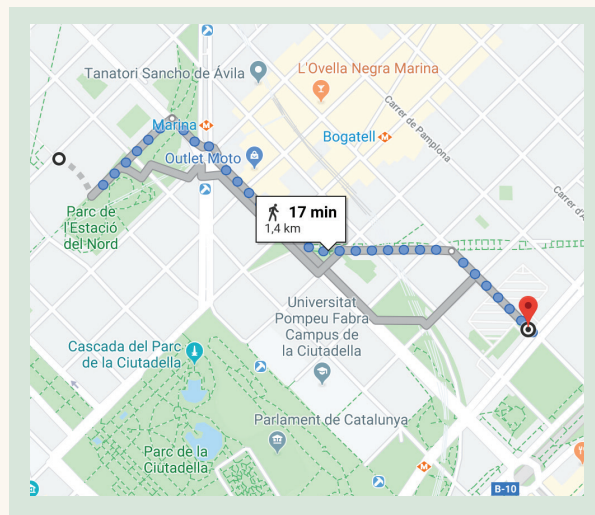
From 'Estació de França' train station

If you arrive at this station, the accommodation is only a 17 minute walk away.



From 'Estació d'autobuses Barcelona Nord' bus station

If you arrive at this station, the accommodation is only a 17 minute walk away.



VISA

Citizens from the Russian Federation, Turkey, Albania, Belarus and Georgia will, for the time being, need a Schengen visa to attend the International Session.

If you are in need of one, please send us an email to barcelona2020@eype.es as soon as possible, so that we can arrange the necessary documents for you.

Make sure to send us the following information when requesting your visa: Name and surname, Date of birth, Passport number, Date of issue, Date of expiry and Nationality.

NEXT STEPS

It is time to book your flights! Delegates and Teachers, you are expected to arrive on Wednesday, 15th April before 15:00. Registration will be at the accommodation, Unite Hostel Barcelona (Av. d'Icària, 145, 08005 Barcelona).

If you need to get a Schengen Visa to attend the session, please get in touch with us as soon as possible. Departures will be held all day on Sunday, 19th April.

VISITING BARCELONA

Barcelona is a city full of history and enriching experiences! We've prepared 4 different itineraries for you to enjoy the historical, gastronomical and artistic culture of this amazing city. These itineraries include all the locations you can't miss if you visit Barcelona! These are organized so that you can make them on foot, occasionally having to take public transport to go to the first location and to come back to the hostel. #Sustainthechange

ITINERARY 1 - City Center

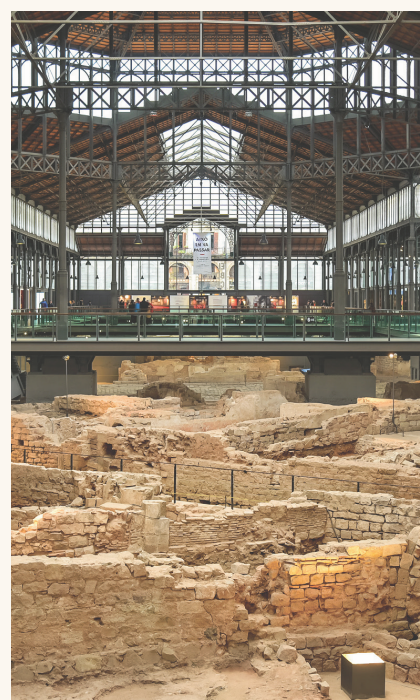
Centre Cultural el Born

What is it? El Born CCM is housed in a building that was formerly El Born market, which opened in 1876. The building forms part of other architectural interventions dating from a historical period in which Barcelona was immersed in the European modernist movement. An archaeological site was found in the subsoil, revealing traces of the demarcations of streets and houses Barcelona of the 1700s, serving as a testament both to life in the city and the consequences of the siege of 1714.

How to get there? 20 min walking from the Accommodation.

How much does it cost? Free entrance & 3€ for the archaeological site

When can I visit it? Tuesday to Sunday and holidays, from 10:00 a.m. to 8:00 p.m.



Food: Pastisseria Hofmann

What is it? The Hofmann Pastry Shop is a reference in the world of pastry, an emblematic place that thrives with the neighborhood of Born-La Ribera, in the heart of medieval Barcelona. Next to the Basilica of Santa Maria del Mar we find Paseo del Born, a lively boulevard full of contrasts. Its shops of all kinds (artisan, vintage, etc, all of them with their original touch and essence), its charming bars and its small and lovely restaurants contribute to life to the most authentic neighborhood of Barcelona. A few meters away we discover aromas such as chocolate, butter, vanilla, cinnamon and caramel. Aromas all of them that come from the Hofmann Pastry Shop.

How to get there? Carrer dels Flassaders, 44, 08003 Barcelona



Museu Picasso de Barcelona

What is it? The Picasso museum is a key reference for understanding the formative years of Pablo Picasso. The genius of the young artist is revealed through the 4,251 works that make up the permanent collection. Furthermore, the Picasso museum, opened in 1963, also reveals his deep relationship with Barcelona. The Museum occupies five large town houses or palaces on the street carrer de Montcada. A good example of the Catalan civic gothic style.

How to get there? Carrer Montcada, 15-23, 08003 Barcelona

How much does it cost? General price: 12€, Reduced price: 7€

When can I visit it? Tuesday to Sundays from 9am to 7pm and Thursday from 9am to 9.30pm

Mercat de Santa Caterina

What is it? Located in the heart of Ciutat Vella, the Santa Caterina Market has been an exceptional witness to the history of Barcelona. In fact, this was the first covered market in the city. The most iconic element is a colorful mosaic of Gaudinian resonances made of 325,000 pieces and that wants to reproduce the colors of the fruit and vegetable stalls that used to be in the city's squares.

How to get there? Av. de Francesc Cambó, 16, 08003 Barcelona

When can I visit it? Monday, Wednesday and Saturday from 7.30 am to 3.30 pm and Tuesday, Thursday and Friday from 7.30am to 8.30pm.



Plaça Fossar de les Moreres

What is it? The Fossar de les Moreres, the old church cemetery, became historically important during the siege of Barcelona (1713-1714), when it was turned into the common grave of the men and women who died fighting to defend the city. It was remodelled and acquired its current layout in 1989, and in 2001, a torch was added with an eternal flame in memory of those who fell in the siege.

How to get there? Plaça Fossar de les Moreres, 08003, Barcelona

Basílica de Santa Maria del Mar

What is it? The basilica of Santa Maria del Mar in Barcelona, also known as the “cathedral of La Ribera”, is one of the most perfect examples of Gothic style architecture due to its harmonious proportions and the serenity of the ensemble.

It was built in just 55 years, from 1329 to 1384, and is the only surviving church in the pure Catalan Gothic style.

How to get there? Plaça Santa Maria, 1, 08003 Barcelona

When can I visit it? Monday to Saturday, from 9am to 1pm & 5pm to 8.30pm. Sunday & public holidays, from 10am to 2pm & 5pm to 8pm.



Plaça Sant Jaume

What is it? The Plaça Sant Jaume has been the city’s political centre almost since its inception. Today the Plaça Sant Jaume is an open space, a “lung” in the middle of the Gothic Quarter. The square is the site of the most important buildings in the lives of Barcelona and Catalonia: City Hall and the Palau de la Generalitat.

How to get there? From the Basílica de Santa Maria take the Carrer de l’Argenteria and when you arrive at Via Laietana, turn to your left to Carrer de Jaume I. At the end of this street you’ll find the Sant Jaume square.

Plaça Felip Neri

What is it? The narrow, labyrinthine streets of the Gothic Quarter come out into this unexpected spot. A tiny square with a charming little fountain in the middle and overlooked by the baroque church of Sant Felip Neri. On one side, you can see the buildings that once housed the city’s shoemakers’ and coppersmiths’ guilds, which moved here from their premises on Carrer de la Bòria and Carrer de la Corribia, respectively.

How to get there? From the Plaça Sant Jaume, take the street at the right of the Palau de la Generalitat, the Carrer del Bisbe. Turn left onto the first street, in the Carrer de Sant Sever, and turn right onto the first street and you’ll find the Plaça Felip Neri.



Catedral de Barcelona

What is it? The Catedral de la Santa Creu i Santa Eulàlia watches impassively the passing of time in a constantly moving and changing Barcelona. The Cathedral also reflects the different generations who have left their imprint and the blend of architectural styles in this predominantly Gothic building which needs to be viewed inside in order to fully understand its splendour.

How to get there? After you've visited the Plaça Felip Neri return to the Carrer del Bisbe and walk straight till you find the Avinguda de la Catedral.

How much does it cost? Free entrance.

Food: Can Culleretes

What is it? Barcelona is full of emblematic establishments, but there are some that stand out above the rest. This is the case of the Can Culleretes restaurant, founded in 1786, and which is considered by the Guinness Book of Records as the oldest in Barcelona and the second in Spain. The establishment is located in the heart of the district of Ciutat Vella (c. Quintana, number 5) and has not stopped serving meals for 228 years.

How to get there? Carrer d'en Quintana, 5, 08002 Barcelona

How much does it cost? 25-30€

Food: Rocambolesc

What is it? The Rocambolesc project starts from the willingness of Jordi Roca, one of the most recognized chefs in the world, to recover the traditional dessert cart of El Celler de Can Roca, his family restaurant, which had disappeared from the restaurant's room just when he took care of the sweet part of the menu.

How to get there? La Rambla, 51-59, 08002 Barcelona

How much does it cost? 4-5€





La Rambla & Plaça Catalunya

What is it? La Rambla is exactly 1.2 kilometres long and nearly everyone who visits Barcelona walks along it. La Rambla was laid out in 1766, following the contours of the medieval city walls that had bounded this part of Barcelona since the 13th century. The locals took it to their hearts straightaway. In Barcelona, a city of narrow, winding streets, the Rambla was the only space where everyone could stroll and spend their leisure time. And we mean everyone. Because of its central location, the Rambla became a meeting place for all the social classes.

Mercat de la Boqueria

What is it? La Rambla's history is the Boqueria Market's history. The evolution from a past of peddlers to a modern and charming present, full of colour and life. The market is a metaphor for Barcelona's life, a human river that is the delight for those who like watching.

Plaça Catalunya

What is it? This lively square is the heart of Barcelona and it's beating strongly. A favourite meeting point, it's also the geographical space that separates the districts of Ciutat Vella and the Eixample. Steeped in history, the Plaça de Catalunya is the nerve centre of the Catalan capital.



Fundació Mapfre

What is it? The Exhibition hall is located within the Casa Garriga Nogués, in the heart of the Barcelona Eixample district. We really recommend you the current exhibition about Carlos Pérez Siquier (1930), a leading figure in the forging of photographic modernism and the professionalizing of this medium in Spain.

How to get there? Carrer de la Diputació, 250, 08007 Barcelona

How much does it cost? 3€

ITINERARY 2 - Ciutadella & Poblenou

Parc de la Ciutadella

What is it? Built towards the end of the 19th century, this was the first place to be specifically designed as a public park. It is a widely used space for all kinds of leisure and cultural activities. It contains over a hundred species of plants, with a large number of century-old trees and interesting sculptures.

Ciutadella Park has a large number of century-old trees and a wide range of elements: the monumental waterfall, 19th-century buildings now used as museums, a lake for rowing boats, pathways and numerous sculptures. It shares the site with the city zoo.

How to get there? It's just 15 minutes away from the Hostel!



Arc de Triomf

What is it? In 1888 Barcelona hosted the Universal Exhibition. The Arc de Triomf was built as the gateway to the fair which was held in the Parc de la Ciutadella. The monument is classical in shape and proportions and features ground-breaking sculptural and decorative finishes replete with symbolism. It has become one of the city's iconic landmarks.

Passeig Sant Joan

What is it? The Passeig de Sant Joan connects the neighbourhood of Gràcia with the Arc del Triomf right by the Born district. It doesn't just link two of the city's coolest neighbourhoods, it has recently become the go-to place for Barcelona locals. It has become a hotspot with interesting bars and restaurants, delightful shops and places that will simply amaze you.

Mercat del Encants

What is it? The city's old flea market, known as the "Encants vells" or Fira de Bellcaire, moved to the other side of the Plaça de les Glòries in September 2013. It now stands on a triangular site between Carrer Castillejos and Avinguda Meridiana. It is housed under a giant aluminium and zinc pergola with a mirrored ceiling that provides shelter for the hundreds of stalls and reflects the kaleidoscope of goods for sale and curious shoppers below.

Museu del HUB

What is it? The Museu del Disseny de Barcelona brings together, under one roof, the collections of the Museu de les Arts Decoratives, the Museu de Ceràmica, the Museu Tèxtil i d'Indumentària and the Gabinet de les Arts Gràfiques, to showcase its vast heritage of more than 70,000 objects. The Museu del Disseny is based on a common theme «From the decorative arts to design», and is dedicated to the culture of the object.

How to get there? It's right next to the Encants Market!

How much does it cost? General Price: 6€, Reduced Price: 4€

When can I visit it? Tuesday to Sunday, from 10 am to 8 pm



Food: Sopa Restaurant

What is it? Sopa is a vegetarian and vegan restaurant that offers healthy quality food with macrobiotic influence, suitable for all palates. We are what we eat.

How to get there? Carrer de Roc Boronat, 114, 08018 Barcelona

How much does it cost? 10,50€



Rambla del Poblenou

What is it? This street is the hub of the Poblenou's cultural, social and retail life. As you walk along it, you'll be able to explore this former industrial area and see modernity blend with tradition and the community life that have defined Poblenou over the years.

Food: Tío Che

What is it? Tío Che is a Museum of traditional flavors in artisan products, natural, fresh from the workshop. We worship the classic flavors of horchatas, ice cream, sandwiches, combinations of horchata, and drinks that no longer exist in Barcelona, such as barley slush, a relic. Tío Che is a meeting place for Poblenou, a must-see corner to enjoy a vermouth among residents of the trendy neighborhood of Barcelona. More than a hundred years giving life to the blessed sweetest corner of Poblenou.

How to get there? Rambla del Poblenou, 44, 46, 08005 Barcelona

ITINERARY 3 - Montjuïc

Plaça Espanya

What is it? Plaça d'Espanya is one of the city's major squares. It is surrounded by iconic buildings and in its centre there is a monumental fountain called the Font dels Tres Mars. Designed by Josep Maria Jujol, it symbolises the three seas (mars) that surround the Iberian peninsula.

The continuous movement round the square, which is one of key points in Barcelona's road network, is a reflection of the city's animated character. And the view at night offered by the Magic Fountain and the Museu Nacional d'Art de Catalunya is one of the city's icons.

How to get there? Take the subway L1 in Arc de Triomf or Marina and get off at Espanya.



Les Arenas

What is it? The former bullring in Plaça Espanya, Les Arenes, is today one of the most important and popular shopping centres in the city, both for the locals and tourists. Its history as a bullring dates back to 1900, when it was built by the architect August Font i Carreres in traditional Neo-Mudejar style, making it one of the most important bullrings in Spain.

MNAC

What is it? The Museu Nacional takes visitors on an uninterrupted journey through a thousand years of Catalan art, from the 10th to the 20th centuries, through its four permanent collections: Romanesque and Gothic art, Renaissance and Baroque art, Modern art, photography, drawings, prints and posters and the Catalan Numismatic Department.

How much does it cost? General price: 12€, Reduced price: 9€.

When can I visit it? Tuesday to Saturday, from 10am to 6pm. Sunday and public holidays, from 10am to 3pm. Saturday from 3pm, first Sunday of every month, May 18th and September 11th, free entrance.

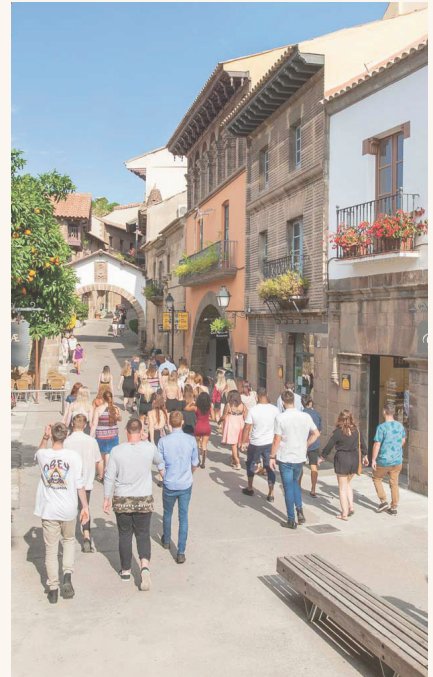


Poble Espanyol

What is it? The Poble Espanyol, or Spanish Village, is one of the city's most popular visitor attractions: a unique combination of architecture, contemporary art, traditional crafts, shops, gastronomy and traditions, in a pleasant setting free of traffic which is perfect for all the family. The Poble Espanyol was built in 1929 for the International Exhibition and resembles an actual village with replicas of 117 real-life scale buildings from different Spanish regions

How much does it cost? 6,30€

When can I visit it? Monday, from 9am to 8pm. Tuesday to Thursday and Sunday, from 9am to 12am. Friday, from 9am to 3am. Saturday, from 9am to 4am.



Castell de Montjuïc

What is it? Standing on a vantage point 173 metres above the port, Montjuïc Castle commands stunning views of the city. Now a peaceable place, the memory of this fortress endures in Barcelona as a symbol of repression but also of the city's struggles during different periods in its history.

How much does it cost? General admission: 5€, Reduced admission: 3€, Free admission: Sundays from 3pm and the first Sundays of the month all day

When can I visit it? Monday to Sunday from 10 a.m. to 6 p.m.

Fundació Joan Miró

What is it? The Fundació Joan Miró is a vibrant art centre that is open to the world where you can discover and explore Miró's and other artists' work.

How much does it cost? General price: 13€, Reduced price: 7€.

When can I visit it? Tuesday to Saturday, from 10 am to 8 pm, Sunday from 10 am to 6 pm.

ITINERARY 4 - Montjuïc

Sagrada Família

What is it? The Sagrada Família is Antoni Gaudí's best-known work and has become an undisputed symbol of Barcelona. This unique modern temple has been under construction since 1882, and is expected to be completed by 2026.

How to get there? 30 minutes walking from the hostel!

How much does it cost? 20€ - 33€.

When can I visit it? Daily from 9am to 8pm.



Diagonal & Casa de les Punxes

What is it? A “large Gothic castle” standing in the middle of Barcelona's Avinguda Diagonal catches the eye of any visitor to the city. The “Casa de les Punxes” (House of Spikes) is really a residential block built in the shape of medieval castle which is one of the most recognisable modernista landmarks on the Barcelona skyline.

How to get there? Avinguda Diagonal, 420, 08037 Barcelona

Casa Batlló

What is it? The colour and fantasy of the Casa Batlló captivates passers-by on the Passeig de Gràcia. Standing halfway up this elegant boulevard and in a strongly contrasting style to the neighbouring houses, the Casa Amatller and Casa Lleó Morera, Gaudí's building reveals the splendour of an architect who was able to work on this project with total creative freedom, Antoni Gaudí.

How to get there? Passeig de Gràcia, 43, 08007 Barcelona

How much does it cost? General price: 25€, Students: 22€

When can I visit it? Daily, from 9am to 9pm.



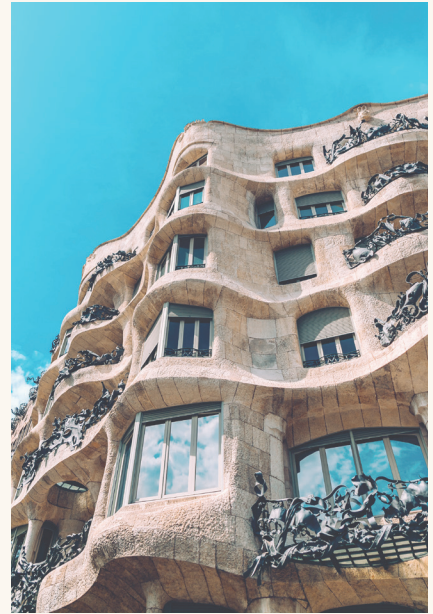
La Pedrera, Casa Milà

What is it? In the central Barcelona's Passeig de Gràcia, we find the Casa Milà or La Pedrera, a blend of fantasy and functionality make this architectural landmark a must-see visitor attraction. This is the culmination of Antoni Gaudí's career, designed as a modernista building tailored to the new social needs, without forgetting his main source of inspiration: nature and organic forms.

How to get there? Passeig de Gràcia, 92, 08008 Barcelona

How much does it cost? 22€

When can I visit it? Daily, from 9am to 6.30pm



Vila de Gràcia

What is it? Formerly a separate village, Gràcia has now been absorbed into Barcelona's urban fabric. It still retains its own unique personality and age-old customs among its network of small, narrow bustling streets and numerous squares where locals meet. Despite its humble origins, Gràcia's population has always been enlightened; it still has an active political and social life and an extensive network of deeply rooted civic, cultural, sporting and artistic institutions.

Squares in Gràcia

What is it? The squares were built as a result of the development of the former village of Gràcia and have become the focus of recreational and social life for locals and visitors in Barcelona alike. The neighbourhood is dotted with over 15 of them, places which afford light and shade, where people can meet and chat: colourful spaces which appear, almost by surprise, among the narrow streets.

The squares include literary landmarks, such as the Plaça del Diamant, which gave its name to the novel by the Catalan authoress Mercè Rodoreda, and historic ones, such as the underground air-raid shelters dating from the Spanish Civil War, and have become iconic symbols of Gràcia and Barcelona. To the south, the **Plaça del Raspall** and the **Plaça del Poble Romani** are frequented by the neighbourhood's traditional Romany community. The **Plaça Rius i Taulet**, where the town hall stands, has a splendid clock tower in the centre. Nearby, the charismatic



Plaça del Sol is the meeting place for young people. **The Plaça de la Revolució** is more modest in scale, and dotted with trees that provide welcome, cooling shade. The square leads to the Carrer Verdi and the adjacent **Plaça de la Virreina** where the parish church of Sant Joan and the workers' cottages evoke the true flavour of this once small village. The neighbouring Plaça del Diamant features a sculpture of La Colometa, the main character in Rodoreda's novel. If you want to escape to more peaceful squares, head to the Plaça del Nord and the Plaça de Rovira i Tries, which takes its name from the architect who is the subject of the sculpture in the square.

Park Güell

What is it? No work by Gaudí better encapsulates the complete and perfect harmony of nature and architecture than Barcelona's Park Güell. Initially designed as an English-style garden-city – hence the name Park – it eventually became Barcelona's most unusual public park.

How much does it cost? 10€

When can I visit it? Daily from 8am to 8.30pm.



OTHER ACTIVITIES



Palau de la música

What is it? We invite you discover the Palau de la Música Catalana, the only concert hall in the world to be declared a UNESCO World Heritage Site. It was designed by the architect Domènech i Montaner as the home of the Orfeo Català choir. Funded by public donations, the Palau is one of the most iconic examples of Catalonia's architectural and musical heritage.

How to get there? Carrer Palau de la Música, 4-6, 08003 Barcelona

How much does it cost? General price: 20€, Students: 10€.

When can I visit it? Monday-Sunday from 10 to 15.30h.

Golondrines

What is it? Sail along the Barcelona coast past the city's beaches on board this catamaran. A relaxing boat ride showing the city from another angle.

How to get there? Moll de les Drassanes, 2, 08039 Barcelona

How much does it cost? 40 minutes for 7€.

CCCB

What is it? The CCCB is a multidisciplinary cultural centre that deals with the key challenges of contemporary society through different languages and formats, with an extensive programme that includes major thematic exhibitions, series of conferences and literary meetups, film screenings and festivals. We really recommend you the exhibition "Gameplay".

How to get there? Carrer de Montalegre, 5, 08001 Barcelona

How much does it cost? General admission: 6-8€, Reduced price: 4-6€

When can I visit it? From Tuesday to Sunday and bank holidays from 11.00 to 20.00 CET. Non-holiday Mondays Closed.

MACBA

What is it? The MACBA's programme of events explores the most complex visions of contemporary art in a space that is open to the exchange of ideas and experimentation set out around a landmark cultural plaza that includes a Gothic chapel and the iconic museum building designed by Richard Meier.

How to get there? Plaça dels Àngels, 1, 08001 Barcelona

How much does it cost? 11€

El Raval

What is it? Barcelona's Raval neighbourhood, which was hemmed in by the city walls until 1859, is now bounded by La Rambla, Carrer Pelai, the Ronda Sant Antoni, Ronda Sant Pere and the Paral·lel. These ancient Roman roads marked out the boundaries of the walls which were demolished so that the rapidly growing city could expand.

Barceloneta

What is it? This beach is inextricably linked to the fishing quarter of the same name, Barceloneta, Barcelona's classic neighbourhood by the sea, where the people of Barcelona love to come and eat fish and seafood dishes and "tapas". Located in the traditional fishing district, this is one of Barcelona's oldest and best-loved beaches.



CONTACT

The organising team is looking forward to meeting you.

MAIL:

- **EYPE:** info@eype.es
- **SESSION'S EMAIL:**
barcelona2020@eype.es

PARTICIPANTS SUPPORT:

- Rebeca Cires +34 648729925
- Paula Sánchez +44 7850560731
- Pablo Luengo +34 601467422

CONTACT HEAD ORGANISERS



Nora Carbonell i Vilaplana

+34 681 054 218



Paula Flores Santiago

+34 619 681 463



Anna Funke Casellas

+34 674 606 050

FOLLOW US ON [**FACEBOOK**](#) AND OUR [**WEBSITE**](#)

#SUSTAINTHECHANGE

By not printing this booklet you will
be contributing to a **better and
sustainable world** for all living beings

